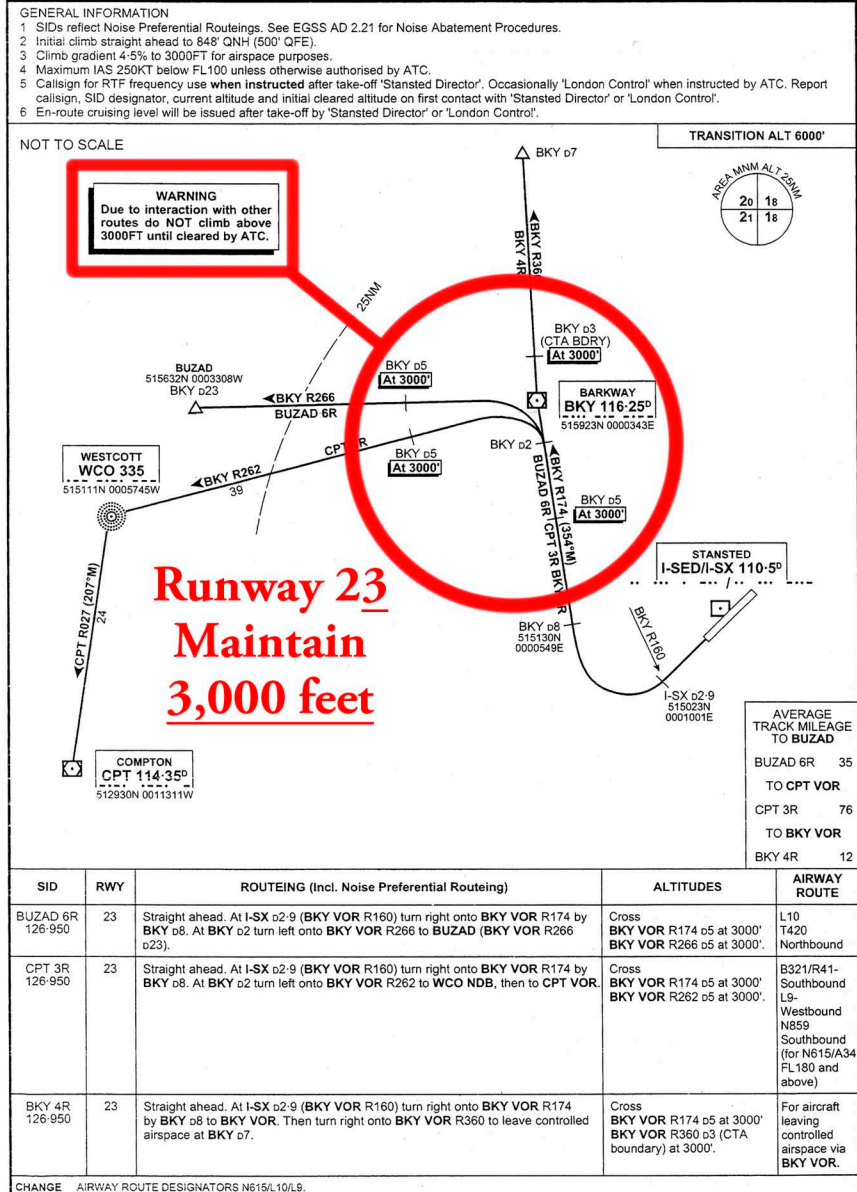


# BUZAD, COMPTON

## & BARKWAY SIDS

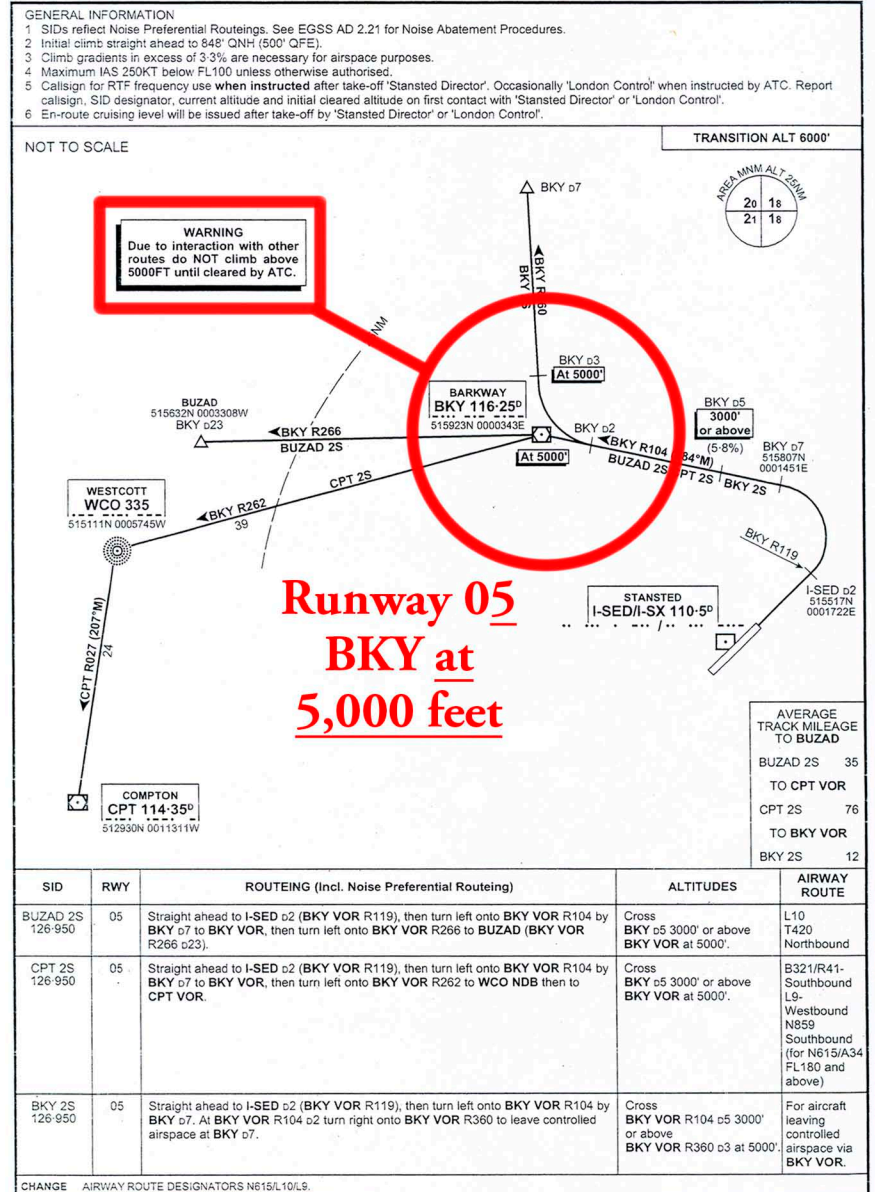
### BUZAD/COMPTON/BARKWAY SIDS - RWY 23 LONDON STANSTED



Civil Aviation Authority

AMDT AIRAC 12/03

### BUZAD/COMPTON/BARKWAY SIDS - RWY 05 LONDON STANSTED



AMDT AIRAC 12/03

Civil Aviation Authority

## Important:

**Do NOT climb above SID altitudes unless instructed by ATC.**

Since 2003 there have been 16 'Level Busts' on departure from Stansted. 10 of these have involved the stepped climb on the BZD / CPT SID.

**Please ensure that you understand the SID profile.**

**Do NOT squawk ident until requested**

